



Wichita Professional Communicators

Affiliated with Kansas Professional Communicators and NFPW

www.wichitaprofessionalcommunicators.com

VOL. 52 | No. 8 | Aug. 2023

WPC August Program

What: “Everything is different: Now what?” with Polly Basore Wenzl of The Wichita Beacon

When: 11:30 a.m. – 1 p.m.
Wednesday, Aug. 2, at Larkspur
Bistro & Bar

Registration: **RSVP by noon** on Tuesday, Aug. 1, to save \$5! Advance tickets are \$20 for members and \$25 for nonmembers. Walk-ins are \$25 for members and \$30 for nonmembers. Students are \$10. (Ticket price includes buffet lunch, water, coffee or tea. Please note: If you register to pay at the door, you will be invoiced if you do not attend.)

Everything is different: Now what?

Polly Basore Wenzl

The Wichita Beacon



Join us in August as an OG print journalist discusses the personal and professional challenges of reinvention necessary to engage readers with local news in the age of YouTube and TikTok.

Born and raised in the college town of Stillwater, Oklahoma, Polly left after graduation to pursue big city dreams that took her to New York City, Moscow and Washington, D.C. A job with The Wichita Eagle brought her to Kansas in 1998, where she stayed by choice.

Polly spent the first 15 years of her career as a newspaper journalist, then another 19 years exploring a variety of word-related roles: philanthropist, book author, language arts teacher, nonprofit communications director, university outreach specialist and adjunct in-



11:30 A.M. AUG. 2 AT LARKSPUR

structor. She returned to her journalism roots in 2022, becoming the editor of The Wichita Beacon, a non-profit, online news startup. Through it all, she has always been a storyteller. Polly writes as her life has been lived — with purposeful vulnerability meant to engender compassion and inspire hope.

Ticket price includes buffet lunch and water, coffee or tea.

Your purchase helps to fund WPC's scholarship. You may donate additionally via [Eventbrite](https://www.eventbrite.com) when you register for the meeting, or donate [online](https://www.eventbrite.com).

WPC monthly meetings and annual fundraisers support a scholarship fund for Wichita-area students pursuing a career in communications.

Job Opportunities

Keeping an eye out for you

- The **Kansas News Service** is looking for a **health equity reporter**.
- **FOX Kansas** is looking for a **sales professional**.
- **WSU Tech** is hiring an **assistant creative director**.
- **Textron Aviation** is looking for a **communication associate**.
- **KSN** is hiring for a **multimedia journalist**.
- **Wichita Police Department** is looking for a **public information officer**.

From the WPC President

Go out and vote



National elections often have showier headlines, but municipal elections play a direct and immediate role in shaping our day-to-day lives. They determine the candidates who will represent Wichita, making decisions about local policies, education, infrastructure, public safety, and more. Voting in primary elections empowers us to select candidates whose values

and visions align with our own, and who genuinely understand our community's unique needs.

I hope you will join with me in exercising your right to vote in the primary election and again in November!

More information for voters can be found at sedgwickcounty.org/elections/.

Naomi Shapiro

**YOUR
VOTE
MATTERS**



WPC & AFFILIATES CALENDAR

Aug. 2: WPC monthly program, 11:30 a.m., Larkspur Bistro & Bar

Aug. 7: WPC board meeting, noon, via Zoom

Sept. 7: WPC Mixer and Silent Auction, KMWU Studios

Tickets now available: WPC Scholarship Fundraiser and Mixer

This year's Wichita Professional Communicators Scholarship Fundraiser and Mixer will be 6-8 p.m. Thursday, Sept. 7, at KMWU studios, 121 N. Mead, Wichita. Join us for wine, food, networking and a chance to bid on many wonderful silent auction items, all to benefit scholarships for future communications students.

Convenient parking is available in the lot just south of the KMWU building.

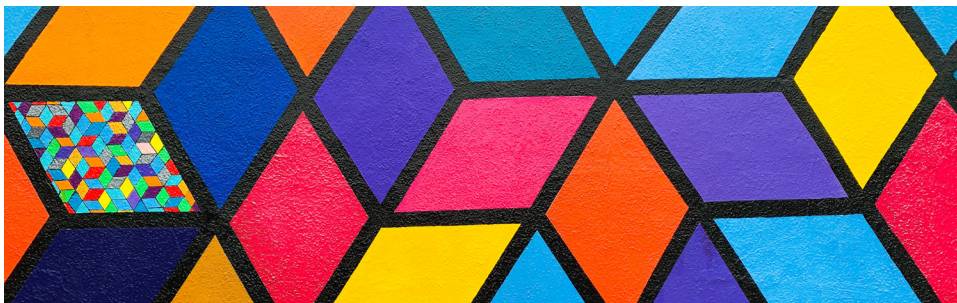
New this year will be a gift card pull, where your cash or card donation of \$15 guarantees you win a gift card to a local restaurant or business valued at \$15 or more. No one needs to go away empty-handed, and our future scholarship recipients will bene-

fit from your generosity.

Tickets are just \$30. Purchase your ticket now or if you're unable to attend, make a tax-deductible contribution to the [scholarship fund](#).

Auction item and gift card donation deadline is fast approaching. If you or your company can donate auction items (valued at \$25-\$50 or more) or if you have new or unused gift cards valued at \$15 or more to contribute to our gift card pull, contact Judy Conkling anytime at 316-519-5718, or judyconkling@gmail.com. All donations are tax-deductible.

Please note: Deadline for donations is Friday, Aug. 25.



2023 WPC BOARD

PRESIDENT

Naomi Shapiro
nshapiro@wichita.gov

PRESIDENT-ELECT & VP, PROGRAMS

Kristin Bogner
kristinlbogner@gmail.com

SECRETARY

Ben Redington
ben@benredington.com

TREASURER

Brittany Sweeney
brittany@sweeneybookkeeping.com

COURTESY/RESERVATIONS

Teri Mott
terimott@gmail.com

VP, MEMBERSHIP

Haley Crowson
hcrowson@kmuw.org

SCHOLARSHIP CO-CHAIRS

Judy Conkling, Wilma Moore-Black
judy.conkling@gmail.com
wilma.black@wichita.edu

HISTORIAN

Shannon Littlejohn
shannon.littlejohn@gmail.com

NEWSLETTER EDITOR

Kylie Cameron
kylie.elizabeth.cameron@gmail.com

WEBMASTER

Kindra Goertzen
kgoertzen@unitedwayplains.org

AT-LARGE MEMBERS

Jill Miller, Beth Bower, Conni Mansaw
jill@jilldmiller.com
beth@goodlifeguy.com
cearlsw@gmail.com

PAST-PRESIDENT

Sean Jones
sjones@wichita.gov